

PRODUCT INFORMATION PACKET

Model No: 365TTFS16132
Catalog No: M917B
75,1800,TEFC,365HPV,3/60/230/460
Vertical Solid Shaft P-Base



Regal and Marathon are trademarks of Regal Beloit Corporation or one of its affiliated companies.
©2018 Regal Beloit Corporation, All Rights Reserved. MC017097E





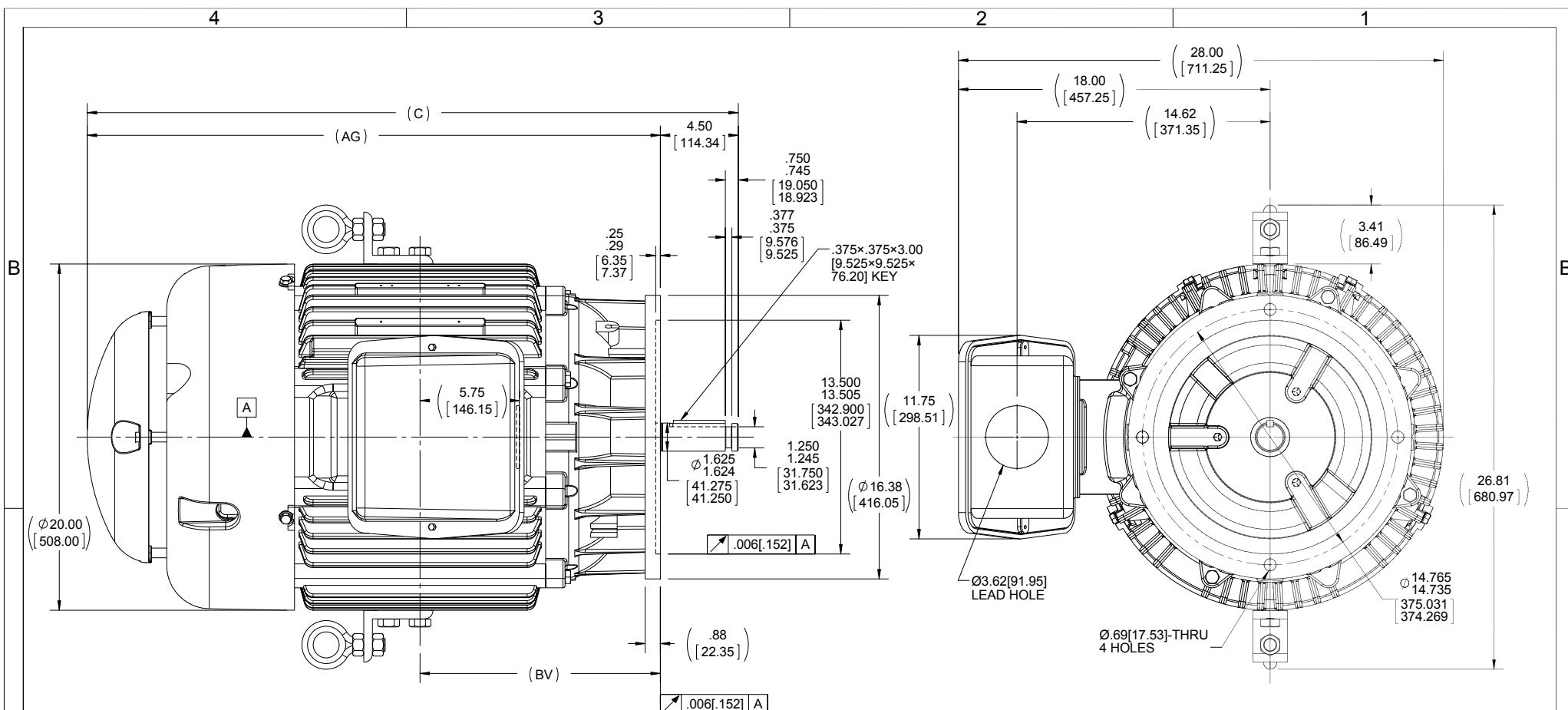
Nameplate Specifications

| | | | |
|----------------------------|------------------------------------|------------------------|-------------------|
| Output HP | 75 Hp | Output KW | 56.0 kW |
| Frequency | 60 Hz | Voltage | 230/460 V |
| Current | 172.0/86.0 A | Speed | 1780 rpm |
| Service Factor | 1.15 | Phase | 3 |
| Efficiency | 95.4 % | Duty | Continuous |
| Insulation Class | F | Design Code | B |
| KVA Code | G | Frame | 365HPV |
| Enclosure | Totally Enclosed Fan Cooled | Overload Protector | No |
| Ambient Temperature | 40 °C | Drive End Bearing Size | 6312 |
| Opp Drive End Bearing Size | 6312 | UL | Recognized |
| CSA | Y | CE | Y |
| IP Code | 43 | | |

Technical Specifications

| | | | |
|-----------------------|------------------------------------|-----------------------|------------------------|
| Electrical Type | Squirrel Cage Induction Run | Starting Method | Across The Line |
| Poles | 4 | Rotation | Reversible |
| Mounting | Round | Motor Orientation | SHAFT DOWN |
| Drive End Bearing | BALL | Opp Drive End Bearing | BALL |
| Frame Material | Cast Iron | Shaft Type | HP |
| Overall Length | 37.61 in | Frame Length | 14.50 in |
| Shaft Diameter | 1.625 in | Shaft Extension | 4.50 in |
| Assembly/Box Mounting | F1/F2 CAPABLE | | |
| Outline Drawing | B-SS518657-1450 | Connection Diagram | A-EE7308K |

This is an uncontrolled document once printed or downloaded and is subject to change without notice. Date Created: 10/30/2018



- NOTES:
 1. CONDUIT BOX CAN BE ROTATED IN 90° STEPS
 2. NAMEPLATES TO BE READ FROM CONDUIT BOX SIDE OF MOTOR

(REPLACES B-SS507344)

| DASH | FRAME | C | AG | BV |
|------|--------|----------------|----------------|----------------|
| 1450 | 360HPV | 37.61 [955.29] | 33.11 [840.99] | 13.88 [352.55] |

| | | |
|---|--------------------|--------------------|
| DRAWING REVISION F | REVISION BY AJW | DATE 07-21-2015 |
| ECO ECO-0081851 | APPROVED BY JHA | DATE 07-21-2015 |
| ECO DESCRIPTION UPDATED TO CURRENT STANDARDS | | |
| <small>COPYRIGHT REGAL BELOIT AMERICA, INC. ALL RIGHTS RESERVED. PROPRIETARY AND CONFIDENTIAL INFORMATION - THIS DOCUMENT IS THE PROPERTY OF REGAL BELOIT AMERICA, INC. ("OWNER") AND CONTAINS OWNER'S PROPRIETARY INFORMATION. ANY PERSON, CORPORATION OR OTHER FIRM RECEIVING IT IS DEEMED, BY RECEIVING IT, TO AGREE THAT IT, AND/OR ANY PART OF IT, SHALL NOT BE DISCLOSED TO ANY PERSON, CORPORATION OR OTHER ENTITY, DUPLICATED, AND/OR USED, EXCEPT AS EXPRESSLY APPROVED IN WRITING IN ADVANCE BY OWNER. THIS DOCUMENT SHALL BE RETURNED TO OWNER UPON REQUEST. IT MAY BE SUBJECT TO CERTAIN RESTRICTIONS UNDER APPLICABLE EXPORT CONTROL LAWS AND REGULATIONS.</small> | | |

| | | |
|--|---------|-----------|
| TOLERANCES UNLESS OTHERWISE SPECIFIED: | | |
| DEC. | INCH | mm |
| .X | +0.1 | [+2.5] |
| .XX | +0.03 | [+0.76] |
| .XXX | +0.005 | [+0.127] |
| .XXXX | +0.0005 | [+0.0127] |
| REMOVE BURRS & BREAK SHARP EDGES: .003/.015 [0.076/.381] X 45° | | |
| CORNER FILLETS: R.02 [51] | | |
| MACHINED SURFACES: 200 $\sqrt{\text{INCH}}$ 5.1 $\sqrt{\text{mm}}$ | | |
| mm SHOWN IN [BRACKETS] | | |

| |
|------------------------|
| DRAWN BY TJB |
| DATE 08-10-2001 |
| APPROVED BY GK |
| DATE 08-13-2001 |
| REFERENCE |
| THIRD ANGLE PROJECTION |

| | |
|---|----------------------------|
| Regal Beloit America, Inc. | |
| DESCRIPTION OUTLINE 360HPV-TEFC-VERT. 'P' BASE | |
| MATERIAL | PROCESS/FINISH |
| SIZE B | DRAWING NUMBER SS518657 |
| SHEET 1 OF 1 | |


LOW VOLTAGE



HIGH VOLTAGE



VIEW OF TERMINAL END

| | | | | TOLERANCES UNLESS SPECIFIED | |  REGAL - BELOIT CORPORATION | DRAWN PGK 06-04-1997 | | | |
|--|--|----------------|-----|-----------------------------|--------|--|----------------------|--------------------|---------------------|------|
| NO. | REVISION | BY & DATE | CHK | ANG | ± | | INCHES | CHK | ML 06-05-1997 | |
| E | CORRECTED IEC MARKINGS ECD-0111208 | WGJ 01-23-2017 | EMH | DEC. | | | | | | |
| D | RE-DRAWN WITH REGAL LOGO ECD-0110493 | WGJ 09-30-2016 | EMH | .X | ±.1 | | | APPD GK 06-15-1997 | | |
| 8 | ADDED IEC DESIGNATIONS MU95020 | TJW 4/30/2010 | MJS | .XX | ±.02 | TITLE | CONNECTION DIAGRAM | | | |
| 7 | REVISED HIGH VOLTAGE L2 WAS L3 CN52600-354 | MRB 09-21-1998 | | .XXX | ±.005 | DELTA CON. - 3Ø - 9 LEADS | | SCALE | | |
| 6 | REDRAWN ON CADD | PGK 06-05-1997 | | .XXXX | ±.0005 | MAT'L. | | REF | | |
| | | | | | ±7'30" | FINISH | | FMF | | |
| | | | | | | | | PREV | | |
| THIS DRAWING IN DESIGN AND DETAIL IS OUR PROPERTY AND MUST NOT BE USED EXCEPT IN CONNECTION WITH OUR WORK ALL RIGHTS OF DESIGN AND INVENTION ARE RESERVED THIS IS AN ELECTRONICALLY GENERATED DOCUMENT - DO NOT SCALE THIS PRINT | | | | | | RFP | CAD FILE EE7308K | SIZE | DRAWING NO. PAGE OF | REV. |
| | | | | | | DIST | | A | EE7308K | E |



P.O. BOX 8003
WAUSAU, WI 54401-8003
PH. 715-675-3311

DATA VOLTS: 460

CERTIFICATION DATA SHEET

CUSTOMER P.O. #:
 ORDER #: A-EE7308K
 REFERENCE MODEL #: 365TTS16132
 CONN. DIAGRAM: B-SS518657-1450
 CAT #: M917B
 OUTLINE: T367405
 CUSTOMER PART #:
 WINDING: NONE 1
 MOUNTING: F1/F2 CAPABLE
 SPEED:
 TYPICAL MOTOR PERFORMANCE DATA

| HP | KW | SYNC RPM | FL RPM | FRAME | ENCLOSURE | TYPE | KVA CODE | DESIGN |
|----|----|----------|--------|--------|-----------|------|----------|--------|
| 75 | 56 | 1800 | 1780 | 365HPV | TEFC | TFS | G | BC |

| PH | HZ | VOLTS | AMPS | START TYPE | DUTY | INSL | S.F. | AMB | ELEV. |
|----------|----|---------|------------|-----------------|------------|------|---------|-----------------|-------|
| 3 | 60 | 230/460 | 172/86 | ACROSS-THE LINE | CONT | F | 1.15 | 40 | 3300 |
| F.L. EFF | | 95.4 | 3/4 LD EFF | 95.4 | 1/2 LD EFF | 95.0 | GTD EFF | ELECT. TYPE | |
| F.L. PF | | 86.0 | 3/4 LD PF | 83.5 | 1/2 LD PF | 76.0 | 95.0 | SQ CAGE IND RUN | |

| F.L. TORQUE | LR AMPS @ 460 V | L.R. TORQUE | B.D. TORQUE | F.L. RISE (°C) |
|-------------|-----------------|-------------|-------------------------|---------------------------|
| 221 LB-FT | 542 | 445 LB-FT | 575 LB-FT | 260% |
| @ 3 FT. DBA | | POWER | ROTOR WK ² | MAX. LOAD WK ² |
| 68 DBA | | 77 DBA | 18.5 LB-FT ² | 500 LB-FT ² |
| | | | SAFE STALL TIME | START/SHOUR |
| | | | 25 SEC. | 2 |
| | | | | MOTOR WGT |
| | | | | 1050 LB. |

*** SUPPLEMENTAL INFORMATION ***

| DE BRACKET TYPE | ODE BRACKET TYPE | MOUNT TYPE | MOTOR ORIENTATION | SEVERE DUTY | HAZARDOUS LOCATION | DRIP COVER | SCREENS | PAINT |
|-----------------|------------------|------------|-------------------|-------------|--------------------|------------|---------|---------------|
| P-BASE | STANDARD | ROUND | SHAFT DOWN | NO | NONE | YES | NONE | BLUE (ENAMEL) |

| BEARINGS | GREASE | SHAFT TYPE | SPECIAL DE | SPECIAL ODE | SHAFT | MATERIAL | FRAME MATERIAL |
|--------------|------------|------------|------------|-------------|-------------------------|----------|----------------|
| DE BALL 6312 | POLYREX EM | HP | NONE | NONE | 1045 HOT ROLLED (C-204) | | CAST IRON |

| THERMOSTATS | PROTECTORS | WDG RTD's | BRG RTD's | THERMISTORS | CONTROL | SPACE HEATERS |
|-------------|------------|-----------|-----------|-------------|---------|---------------|
| NONE | NOT | NONE | NONE | NONE | FALSE | NA |

| R1 (ohms/ph) | R2 (ohms/ph) | X1 (ohms/ph) | X2 (ohms/ph) | Xm (ohms/ph) | VIBRATION (in/sec) | FLOAT |
|--------------|--------------|--------------|--------------|--------------|--------------------|-------|
| 0.056 | 0.036 | 0.319 | 0.386 | 9.242 | 0.150 | ODE |

| | | | |
|-----|--|---------------------------|--|
| * N | | INVERTER TORQUE: NONE | |
| O | | INV. HP SPEED RANGE: NONE | |
| T | | ENCODER: NONE | |
| E | | BRAKE: NONE | |
| S | | FT-LB: NONE | |
| . | | VOLTAGE: NONE | |
| | | HZ: NONE | |

PREPARED BY: FAREEDA DUDEKULA
 DATE: 9/11/2018
 FORM: 3531 REV 4 2/27/06
 UL: V/INS, CONST UL REC

Data Sheet

365TF516132



Submital

Data @ 460 V

Date: 9/11/2018

Customer: _____
Attention: _____

Submitted by: FAREEDA DUDEKULA

Motor Load Data

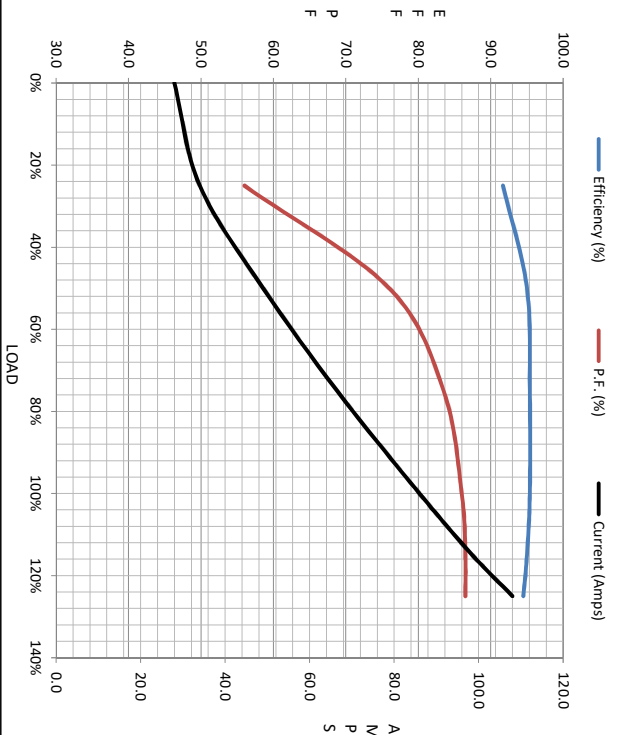
| Load | 0% | 25% | 50% | 75% | 100% | 115% | 125% | LR |
|----------------|------|------|------|------|------|-------|------|------|
| Current (Amps) | 28.0 | 34.0 | 49.0 | 66.5 | 86.0 | 98.5 | 108 | 542 |
| Torque (ft-lb) | 0.00 | 55.0 | 110 | 166 | 221 | 255 | 278 | 445 |
| RPM | 1800 | 1795 | 1790 | 1785 | 1780 | 1,775 | 1772 | 0 |
| Efficiency (%) | | 91.7 | 95.0 | 95.4 | 95.4 | 95.0 | 94.5 | |
| P.F. (%) | 4.5 | 56.0 | 76.0 | 83.5 | 86.0 | 86.5 | 86.5 | 35.5 |

Motor Speed Data

| | LR | Pull-Up | BD | Rated | Idle |
|----------------|-----|---------|------|-------|------|
| Speed (RPM) | 0 | 900 | 1725 | 1780 | 1800 |
| Current (Amps) | 542 | 500 | 300 | 86.0 | 28.0 |
| Torque (ft-lb) | 445 | 375 | 575 | 221 | 0.00 |

Information Block

| | | | | | |
|-----------------------------|--------------------------|--------|--------|--------|--------|
| HP | 75.0 | | | | |
| Sync. RPM | 1800 | | | | |
| Frame | 365182TFC6080 | | | | |
| Enclosure | TEFC | | | | |
| Construction | TFS | | | | |
| Voltage | 230/460 V | | | | |
| Frequency | 60 Hz | | | | |
| Design | A | | | | |
| LR Code letter | G | | | | |
| Service Factor | 1.15 | | | | |
| Temp Rise @ FL | 80 °C | | | | |
| Duty | CONT | | | | |
| Ambient | 40 °C | | | | |
| Elevation | 1,000 feet | | | | |
| Motor/Shaft Wk ² | 18.5 Lb-Ft ² | | | | |
| Ret Wdg | T367405 NONE | | | | |
| Sound Pressure @ 1M | 68 DBA | | | | |
| VFD Rating | NONE | | | | |
| Outline Dwg | B-SS518657-1450 | | | | |
| Conn. Diag | A-EE7308K | | | | |
| Additional Specifications: | | | | | |
| 0 | | | | | |
| 0 | | | | | |
| | EQUIV CKT (OHMS / PHASE) | | | | |
| | R1 | R2 | X1 | X2 | Xm |
| | 0.0560 | 0.0360 | 0.3190 | 0.3860 | 9.2420 |



Speed - Torque Curve

